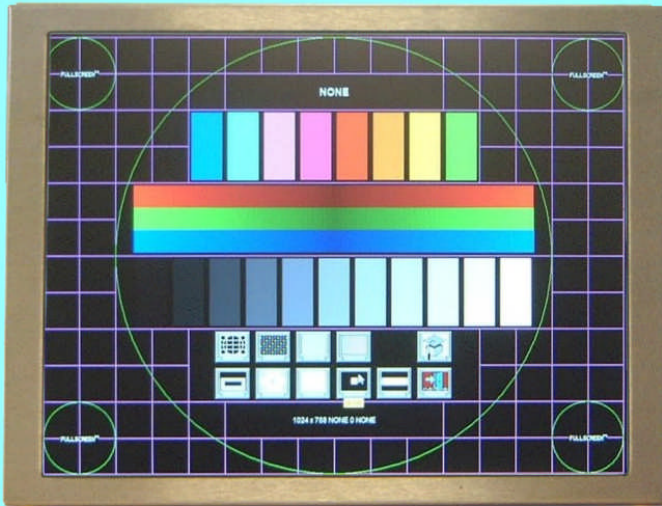
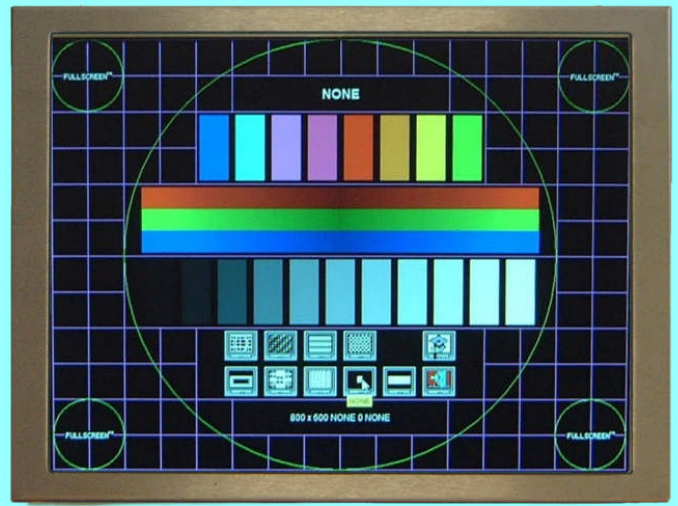


Introduction

The LMG233A-104X01 is a 10.4" NVG compatible 10.4" XGA LCD module with very wide viewing angles. The module contains two LED backlights. The day mode backlight produces a screen brightness of about 1,000 nits for daytime viewing. The night mode backlight uses a NIVIS filter that blocks all the infrared emission from the LED. The following picture shows the display in Day and Night modes.



Day Mode



Night Mode

In the night mode, the display has good, full color with a slight color shift toward the green. The figure on the right shows the chromaticity coordinates of the Red, Green, Blue primary colors and the White color.

Features:

Day mode max. screen brightness - 1,000 nits at 12 Watts backlight power (with drive board).

Night mode max. screen brightness - 30 nits at 4.2 Watts backlight power (with drive board).

Wide viewing angle - > 85° at all viewing angles.
Can be used in either landscape or portrait mode.

Wide dimming ratio LED backlight drive boards with 12V DC input are available.

Card to operate LMG233A - MG21 Controller with LVDS cable

LMG233A 10.4" LCD Module Day Mode & Night Mode Chromaticity

