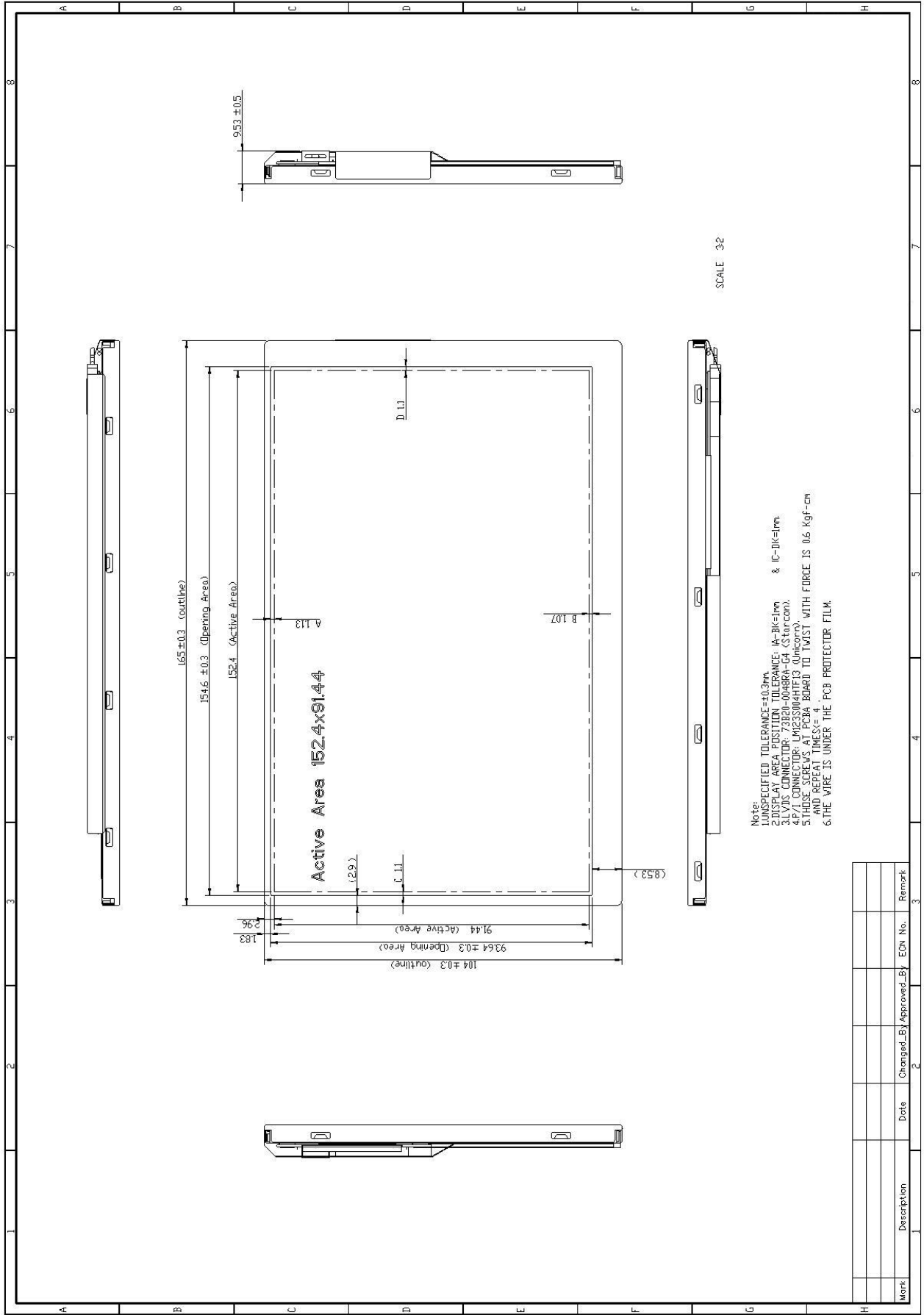


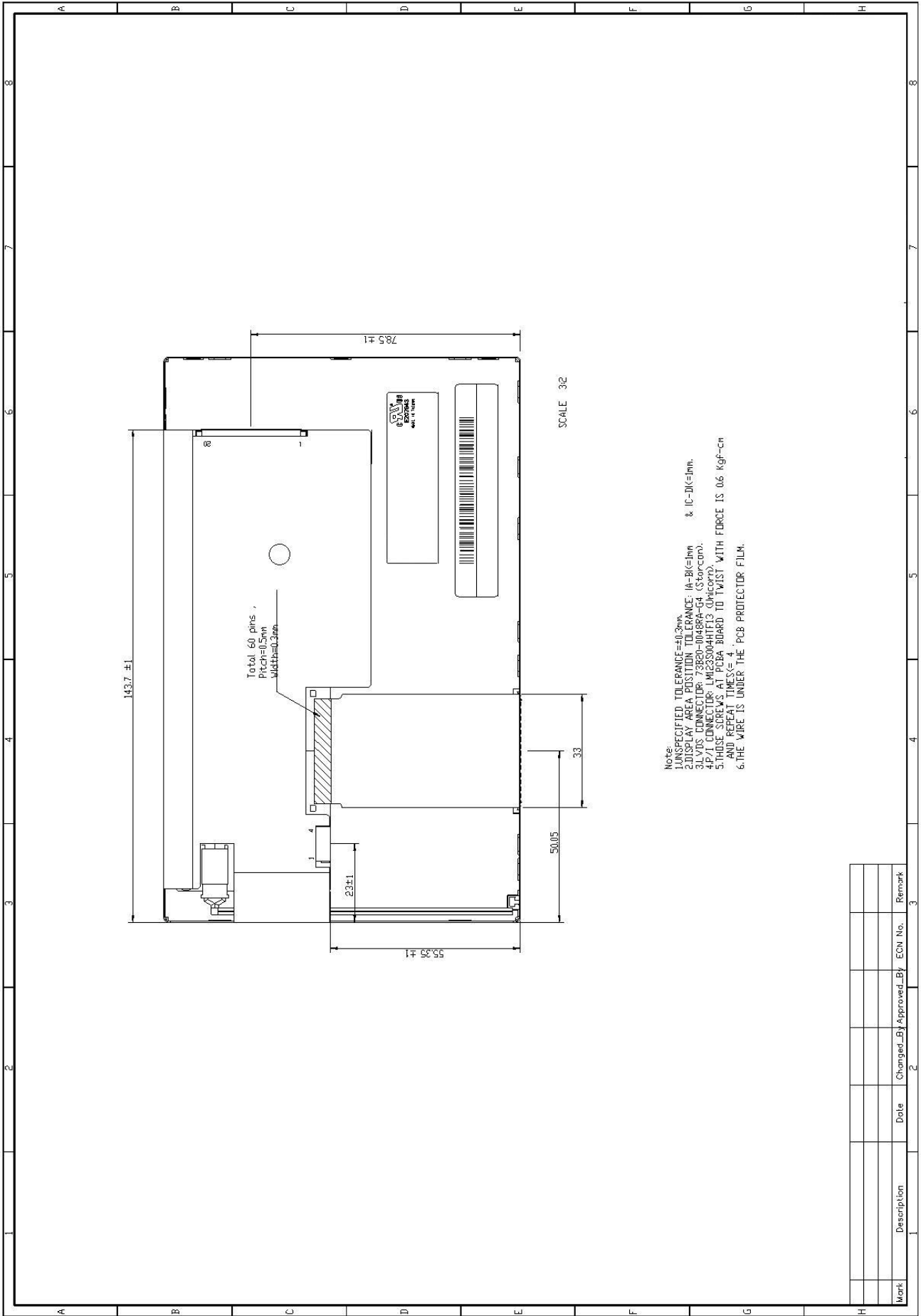
LANDMARK TECHNOLOGY: LM700-I



SCALE 3:2

- Notes:
1. UNSPECIFIED TOLERANCE = ± 0.3mm
 2. DISPLAY AREA POSITION TOLERANCE: A-BK = 1mm & C-DK = 1mm
 3. LVDS CONNECTOR: 73320-0048RA-G4 (Starcon).
 4. P/T CONNECTOR: LM1233004HF13 (Unicom).
 5. THOSE SCREWS AT PCB BOARD TO TWIST WITH FORCE IS 0.6 KgF-cm AND REPEAT TIMES = 4
 6. THE WIRE IS UNDER THE PCB PROTECTOR FILM.

Work	Description	Date	Changed By	Approved By	EON No.	Remark



Work	Description	Date	Changed_By	Approved_By	ECN No.	Remark