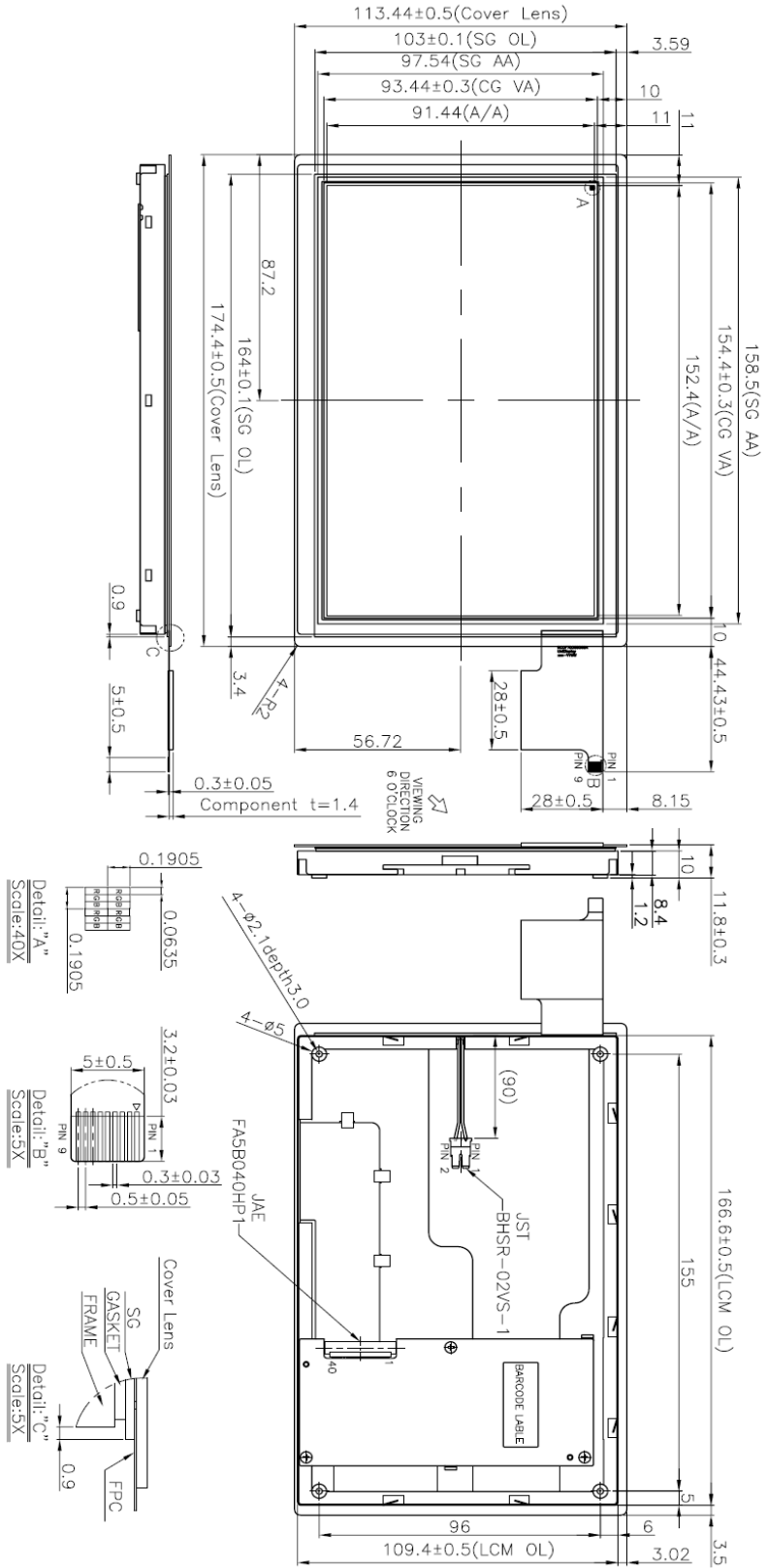


LANDMARK TECHNOLOGY: LM700T-TIV



Input / Output Terminals Pin Assignment TFT-LCD Module

Connector: JAE FA5B040HP1

Pin No.	Symbol	I/O	Description
1	V _{CC}	I	+3.3V power supply
2	V _{CC}	I	+3.3V power supply
3	V _{CC}	I	+3.3V power supply
4	V _{CC}	I	+3.3V power supply
5	NC	I	No Connect
6	DE	I	Input data enable control
7	V _{SS}	I	Ground
8	NC	I	No Connect
9	V _{SS}	I	Ground
10	NC	I	No Connect
11	V _{SS}	I	Ground
12	B5	I	Blue data(MSB)
13	B4	I	Blue data
14	B3	I	Blue data
15	V _{SS}	I	Ground
16	B2	I	Blue data
17	B1	I	Blue data
18	B0	I	Blue data(LSB)
19	V _{SS}	I	Ground
20	G5	I	GREEN data(MSB)
21	G4	I	GREEN data
22	G3	I	GREEN data
23	V _{SS}	I	Ground
24	G2	I	GREEN data
25	G1	I	GREEN data
26	G0	I	GREEN data(LSB)
27	V _{SS}	I	Ground
28	R5	I	RED data(MSB)
29	R4	I	RED data
30	R3	I	RED data

Pin No.	Symbol	I/O	Description
31	V _{SS}	I	Ground
32	R2	I	RED data
33	R1	I	RED data
34	R0	I	RED data (LSB)
35	NC	I	No Connect
36	V _{SS}	I	Ground
37	V _{SS}	I	Ground
38	DCLK	I	Dot Clock
39	V _{SS}	I	Ground
40	V _{SS}	I	Ground

10.2 Backlight Unit

Connector: JST BHSR-02VS-1(N)

Pin No.	Symbol	I/O	Description	Wire Color
1	VLEDA	I	Backlight LED Anode.	Red
2	VLEDC	I	Backlight LED Cathode.	Black

10.3 Projected Capacitive Touch panel

Connector : CVILUX CF25091D0R0-05

No.	Symbol	Functions
1	GND	Ground
2	NC	Not Connected
3	NC	Not Connected
4	VDD	Power Supply Voltage
5	XRES	Reset active high
6	INT	Interrupt active low
7	SDA	I ² C data
8	SCL	I ² C clock
9	GND	Ground